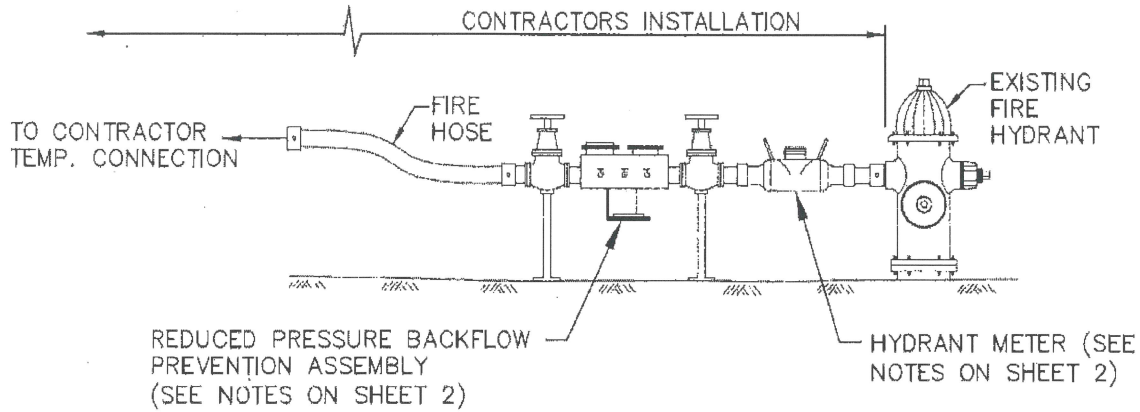
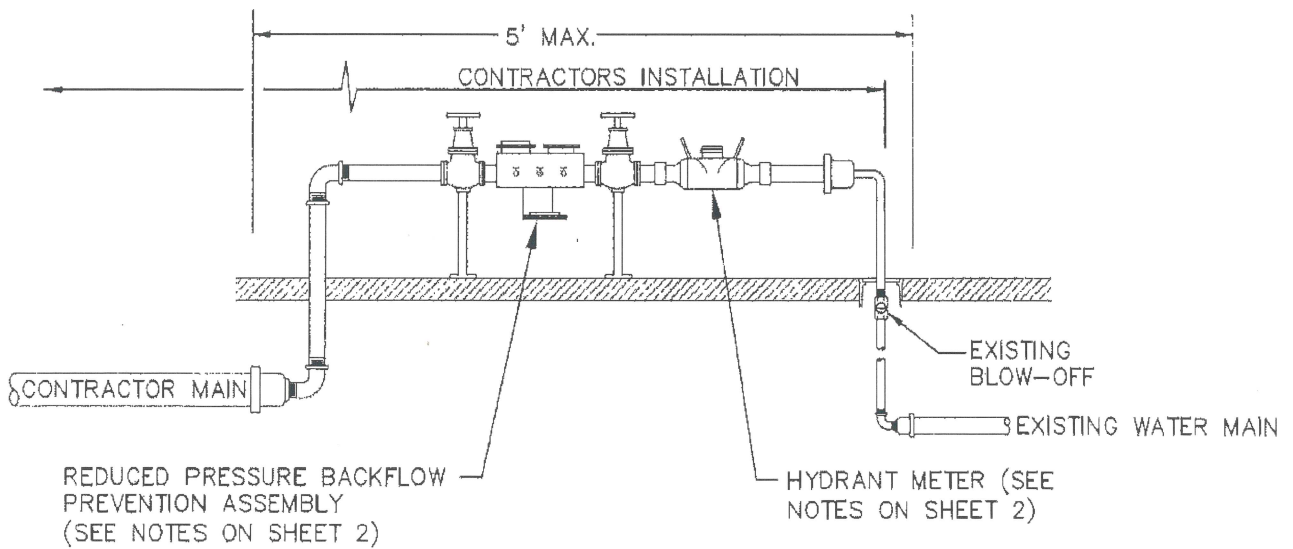


SECTION 105.00

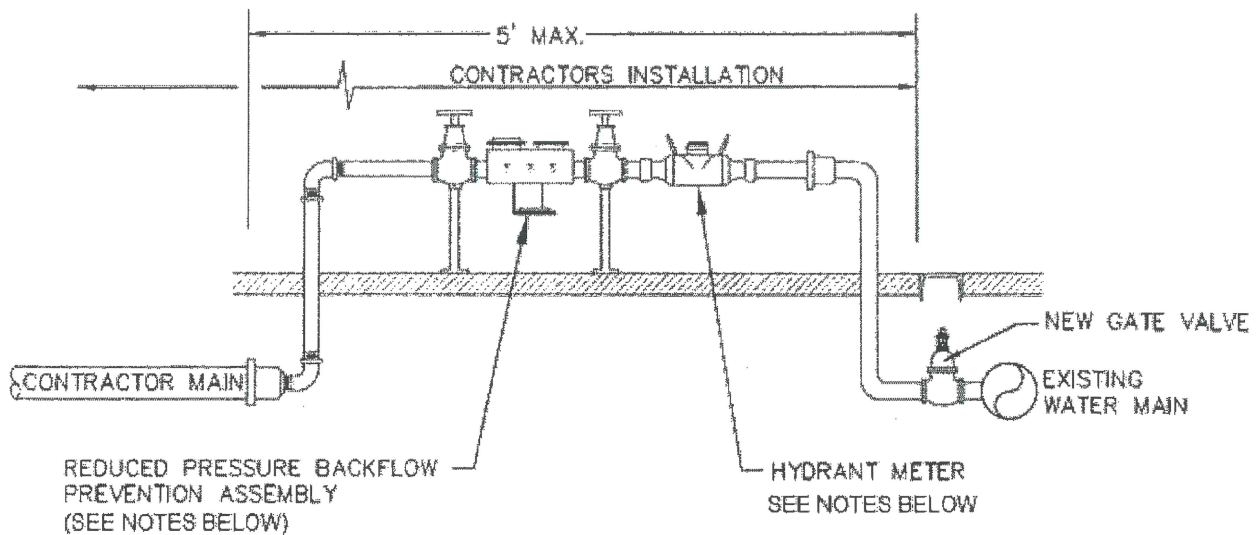
TEMPORARY CONNECTION TO NEW WATER MAIN



TEMPORARY CONNECTION FROM EXISTING FIRE HYDRANT



TEMPORARY CONNECTION FROM EXISTING BLOW-OFF



TEMPORARY CONNECTION FROM
EXISTING WATER MAIN

Notes:

1. Backflow prevention assemblies shall conform to the material requirements of Section 100.00, Water System Materials.
2. Hydrant meters shall be obtained from Centerville CSD, 8930 Placer Road, Redding, CA 96001, (530) 246-0680.
3. Existing water main must be shut down by the District and dewatered by the Contractor. Notification of affected customers is the responsibility of the District. A minimum of two (2) full working days is required.
4. Water shall only be drawn into the Contractor's water main through a District approved reduced pressure principle backflow device.
5. Prior to permanent connection to the District water main, the Contractor's main shall have passed a pressure test, chlorine test, bacteriological test, and have approval from the District Inspector.
6. Upon satisfaction of Notes 4 and 5 and with approval of the District Inspector, connection to the District water distribution system may be made. The District Inspector shall be notified a minimum of two (2) working days prior to start of work.
7. Final system tie-in components shall be pre-chlorinated and pre-flushed in the presence of the District Inspector.