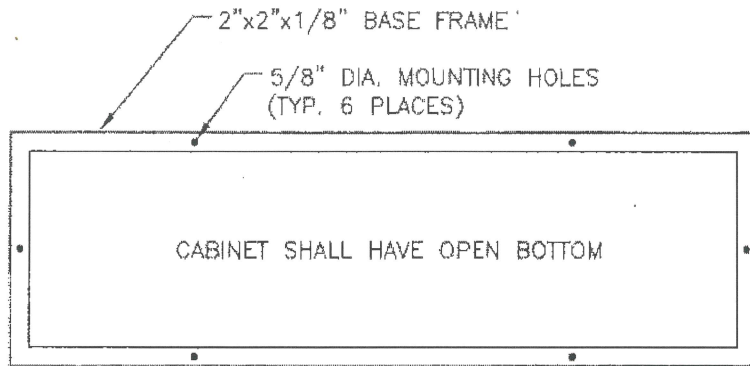


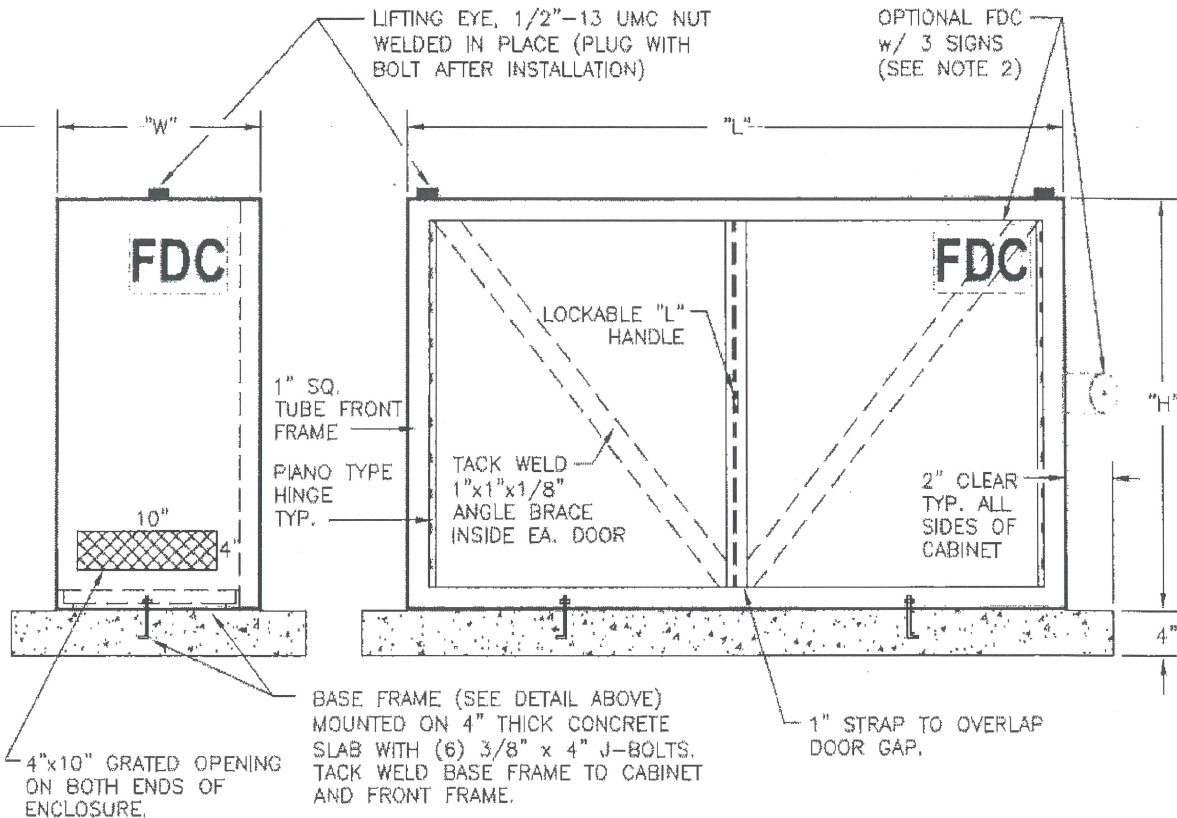
SECTION 132.20

BACKFLOW ENCLOSURE HORIZONTAL ASSEMBLY - 3" & LARGER



CABINET DIMENSIONS			
UNIT SIZE	'L'	'W'	'H'
3" & 4"	78"	24"	52"
6"	96"	24"	60"
8"	108"	30"	69"

BOTTOM MOUNTING FRAME



NOTES:

1. Cabinet and doors to be 14-gauge steel painted olive-green powder coat paint inside and out.
2. When a Fire Department Connection (FDC) is included in Backflow Assembly, a sign shall be installed on the three (3) sides of the enclosure visible from the street, in the upper corner as shown. The signs shall read "FDC" in 6" high, red reflective, block lettering.
3. Backflow enclosures shall meet manufacturer's specifications for all clearances and provide access for testing and maintenance as required.